

State of Missouri
Office of Administration
GOVERNOR'S COUNCIL ON DISABILITY



2009 ANNUAL REPORT

Office of Administration

Governor's Council on Disability

301 West High Street
Suite 250-A
PO Box 1668
Jefferson City, MO 65102

Phone: 573-751-2600
Toll-free: 800-877-8249
Fax: 573-526-4109
E-mail: gcd@oa.mo.gov
Website: www.disabilityinfo.mo.gov



TABLE OF CONTENTS

History	4
Mission / Vision / Goals	4
Council Membership	5
Organizational Structure	6
Council Events 2009 / Programs	7
Finances	8
Accomplishments	9
Technical Assistance	9
Presentations and Exhibits	10
Awards	11
Inclusion Awards	11
Poster & Journalism Contests	13
Publications / Resources	15
Legislative Education Project	15
Missouri Business Leadership Network	16
Missouri Youth Leadership Forum	16
Outreach Activities	18
Boards and Commissions	19
Legislation	21
Personal Independence Commission	21
Upcoming Events / 2010 Meeting Dates	22

HISTORY

The Governor's Council on Disability traces its roots to the World War II era. In 1947, President Harry S Truman issued an Executive Order establishing the President's Committee on Employment of the Handicapped. This Committee was created to assist disabled WW II veterans with reentry into the civilian workforce. In 1949, Missouri established the state Governor's Committee to share information about work related problems facing people with disabilities. In 1994, our statute was updated to broaden our mission beyond employment, enabling the Governor's Council on Disability to become a voice for more than one million Missourians with disabilities in all facets of life, including state government.

MISSION

To provide leadership and support so people with disabilities achieve inclusion and independence.

VISION

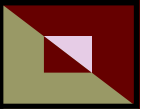
The Missouri Governor's Council on Disability will be recognized, statewide as the primary organization providing leadership to improve the lives of Missouri citizens with disabilities.

GOALS

The Missouri Governor's Council on Disability's Strategic and Operational Plan was reviewed and updated for 2009-10 on November 14, 2008. The Goals are:

- Goal I: Advise all state agencies and advocate for policies and practices that impact Missouri citizens with disabilities.
- Goal II: Encourage system changes and public policies that eliminate barriers to people with disabilities.
- Goal III: Expand opportunities and independence for people with disabilities in all aspects of their lives.
- Goal IV: Gather input from the public on disabilities-related issues and report the results of this information.
- Goal V: Develop, explore, and implement strategies to increase resources for and the operating efficiency of the Council.

For the complete Strategic/Operational Plan, please visit our website at www.disabilityinfo.mo.gov and click on Governor's Council on Disability, Strategic/Operational Plan.



COUNCIL MEMBERSHIP

- 20 members and a chairperson comprise the Council.
- The Governor appoints members.
- The appointment of the chairperson requires the advice and consent of the Missouri Senate.
- Members represent each of the nine U.S Congressional Districts.
- The majority of members are people with disabilities.
- The Governor's Council is comprised of the following committees: Executive and Strategic Planning, Finance and Development, Personnel, Advocacy, Legislative, Programs, and Website committees

Karen Benson
Chair

First Appointed: 4/9/09

Gregory Greven

Member 7

Springfield

First Appointed: 5/16/08

Susan Orton

1st Congressional District

Creve Coeur

First Appointed: 7/19/05

Joan Bergstrom

Member 1

Lee's Summit

First Appointed: 7/15/08

Ronald Hack

Member 10

Sunset Hills

First Appointed: 10/2/09

Joseph Sartorius

Member 2

St. Louis

First Appointed: 11/8/02

Jacqueline Chatman

5th Congressional District

Kansas City

First Appointed: 10/2/09

Mary Ann Harter

3rd Congressional District

Crestwood

First Appointed: 11/16/09

Dr. Hani Soudah

Member 11

St. Louis

First Appointed: 9/27/05

Betty Davidson

Member 5

St. Louis

First Appointed: 11/16/09

Todd Mayfield

4th Congressional District

Jefferson City

First Appointed: 10/9/01

Erwin Switzer

Member 8

St. Louis

First appointed: 10/2/09

Edward Duff

Member 6

Joplin

First Appointed: 7/19/05

Teri Miller

Member 9

Chesterfield

First Appointed: 10/2/09

James Trout

Member 3

Webster Groves

First Appointed: 3/4/09

Michael Esser

2nd Congressional District

Chesterfield

First Appointed: 10/14/05

DeAnna Noriega

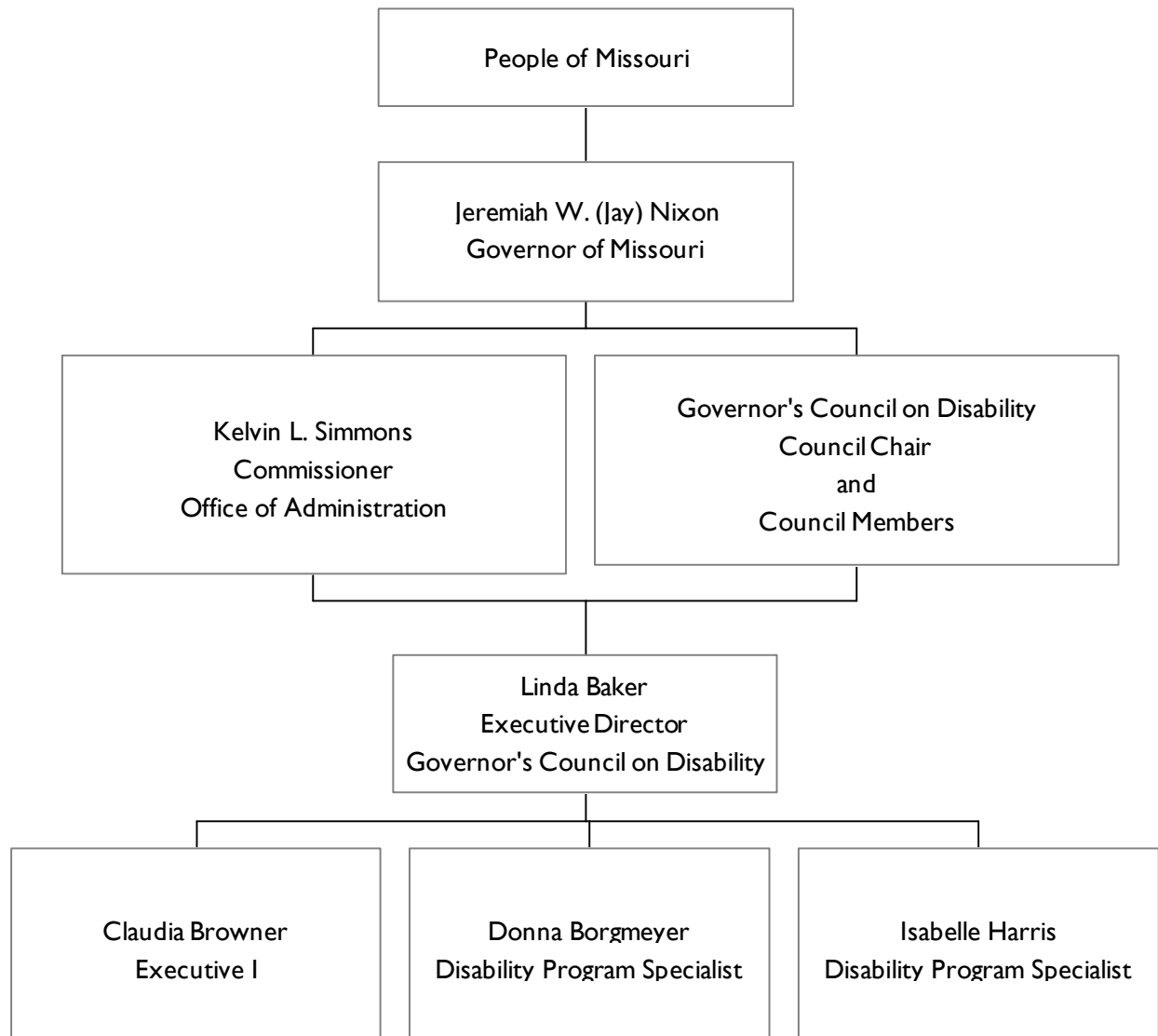
9th Congressional District

Fulton

First Appointed: 10/2/09

There are currently four Council member vacancies.

ORGANIZATIONAL STRUCTURE





COUNCIL EVENTS 2009

COUNCIL MEMBERSHIP

- Karen Benson was appointed as Chairperson of the Council effective April 9, 2009. The appointment was confirmed by the Senate on May 7, 2009.
- In 2009, the following eight new Council members were appointed by Governor Jeremiah W. (Jay) Nixon:
Jacqueline Chatman, Betty Davidson, Ronald Hack, Mary Ann Harter, Teri Miller, DeAnna Noriega, Erwin Switzer, and James Trout
- The following Council members resigned from the Council during 2009 or were replaced due to their terms being expired:
Joseph Colagiovanni, Matthew Hughes, Mary Ellen Jenison, Sarah Olson, Renee Powell, and Molly Tallarico

PROGRAMS

- The GCD collaborated with the Office of Administration's IT department to continually improve and update the Missouri Disability Portal website which serves as a one-stop access point for the public to obtain information on disability resources.
- The GCD developed and maintained partnerships among the state departments. The state department liaisons are encouraged to attend the quarterly Council meetings and provide input.
- Council staff participated and represented the GCD at Disability Mentoring Day events.
- The GCD received a proclamation from Governor Jeremiah W. (Jay) Nixon, declaring October 21 as Disability Mentoring Day.
- Council staff provided exhibit booths at various conferences throughout the State of Missouri to raise disability awareness and provide information on disability related programs and resources.
- Staff provided presentations on the topics of employment of people with disabilities, disability awareness, service animals, the Missouri Youth Leadership Forum and the Business Leadership Network as requested by agencies and employers.
- The GCD continued its annual programs
 - ⇒ Legislative Education Project
 - ⇒ Poster & Journalism Contests
 - ⇒ Missouri Youth Leadership Forum
 - ⇒ Inclusion Awards

FINANCES

The Governor's Council on Disability's programs are primarily financed through General Revenue. This funding covers personnel costs for most Council activities. GCD's operating budget was reduced by one third in FY10, resulting in a decrease in community outreach for programming and two quarterly meetings in 2010 being conducted electronically. The Fiscal Year 2010 (July 1, 2009 – June 30, 2010) budget is listed below:

Personnel (4 FTE):	\$168,372.00
Operating Expenses:	<u>\$ 20,956.00</u>
Total:	\$189,328.00

At the time of publication, the Council has spent \$10,568.01 in operating expenses, 50.43% of the FY10 budget. Expenses include supplies, travel, Council meeting expenses, and expenses on GCD programs.

The Missouri Youth Leadership Forum (MYLF) and the Poster and Journalism Contests (P&J) are programs that are not funded through General Revenue funds. These programs are funded through a combination of private donations and grants.

The Independent Living Resource Center in Jefferson City is the 501(C)3 fiscal agent for the MYLF and P&J accounts.

The following is a synopsis of the 2009 MYLF event.

Beginning balance OA revolving account (FY10) July 1, 2009	\$16,367.35
2009 MYLF event costs:	
Supplies & Material	\$ 2,018.35
Educational Learning Tools	\$ 188.90
Presenter Fees and Travel Expenses	\$ 1,803.70
Staff and Alumni Travel	\$ 377.00
Accommodations (Interpreters/PCAs)	\$ 1,525.00
Meals (separate from MU billing)	\$ 847.21
University of Missouri – Columbia *	<u>\$12,482.29</u>
Total Spent:	\$19,242.45**
Balance in OA revolving account (Dec. 09)	\$ 5,437.00
Balance in ILRC account (from donations)	\$20,939.46

* Includes: Lodging, meals, banquet facilities, meeting rooms, conference center fees.

** \$8,312.10 were paid from FY09 funds

The average cost of the 2009 MYLF was about \$840 per student delegate.



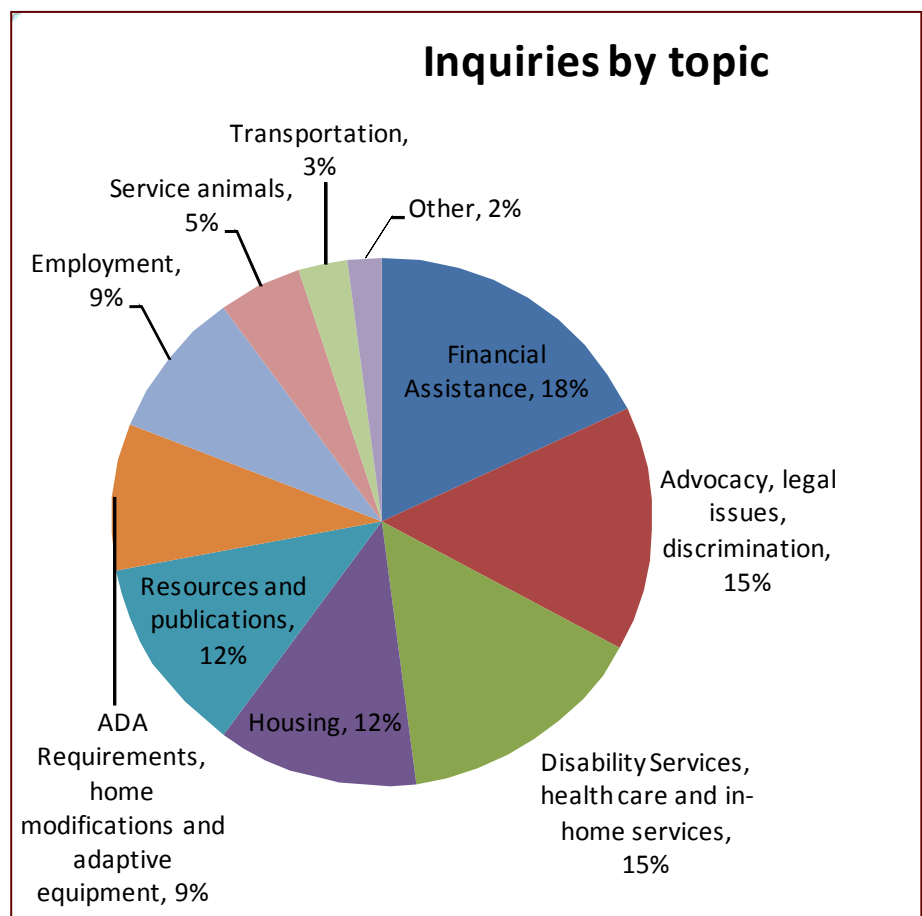
ACCOMPLISHMENTS

TECHNICAL ASSISTANCE

The Governor's Council on Disability provides disability-related technical assistance to individuals, businesses, governmental and agency representatives from all over the state, and occasionally from other states, by phone, letter, or e-mail. Most contacts were from individuals in need of resources in order to live more independently. Referrals were made to Centers for Independent Living, state and federal agencies, and other non-profits, including faith-based groups and community action agencies. In some instances, referrals were made to businesses or for-profit entities. The Council also worked with a number of state legislators to provide solutions to individuals' problems and issues.

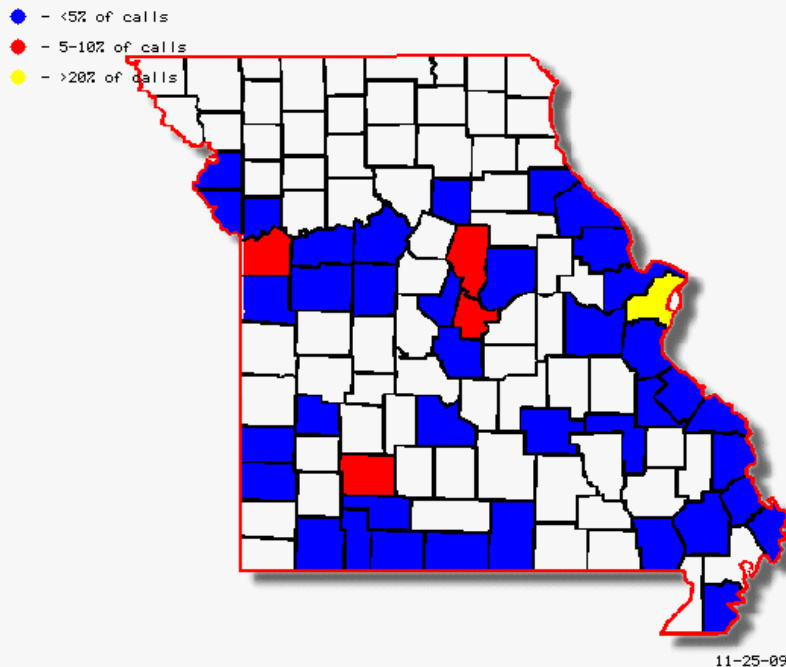
In this past year, the Council received a substantial number of calls and e-mail inquiries concerning financial assistance, housing, employment, funding for health care assistance, utility assistance, service animals, transportation, and home modifications. Other common inquiries included information on disability statistics, state statutes, ADA guidelines and regulations, FMLA issues, how to secure affordable housing, eligibility requirements for disability benefits, and questions about potential discrimination on the job, in housing or in public places. Overall, the Council assisted

more than 280 different individuals with their inquiries. Additionally, the Council responded to more than 260 e-mail inquiries and requests. While the number of callers has decreased by 12.5% compared to 2008, the number of e-mail inquiries has increased by 30%.



ACCOMPLISHMENTS

2009 Phone inquiries by county



The counties displayed on the map include the following:

Group I: (less than 5% of calls)
 Barry, Barton, Buchanan, Butler, Callaway, Cape Girardeau, Cass, Cedar, Christian, Clay, Dent, Franklin, Howell, Iron, Jasper, Jefferson, Johnson, Laclede, Lafayette, Lincoln, Miller, Mississippi, Moniteau, Ozark, Pemiscot, Perry, Pettis, Pike, Platte, Ralls, Randolph, St. Charles, Ste. Genevieve, St. Francois, Saline, Scott, Stoddard, Stone, Taney

Group II: (between 5-10% of calls)
 Boone, Cole, Greene, Jackson

Group III: (more than 20% of calls)
 St. Louis City and County

Total no. of counties listed: 44

PRESENTATIONS AND CONFERENCE EXHIBITS

The Governor's Council on Disability provides educational programs on disability rights and disability awareness, employment of people with disabilities, service animals and other disability-related topics to any group or organization in Missouri requesting such information. Educational programs are specifically tailored to the individual or group to ensure effectiveness. At several of the quarterly public Council meetings, a presentation is provided on different disability-related topics.

During calendar year 2009, Council staff developed and presented over 30 programs to more than 1900 interested individuals around the state.



AWARDS

The Governor's Council on Disability sponsors the Annual Inclusion Awards and Poster and Journalism Contest each year.

ANNUAL INCLUSION AWARDS

The Annual Inclusion Awards recognize and honor private and public employers, individuals, groups, and organizations for their successful inclusion of people with disabilities in the areas of employment, education, advocacy and community. The Council's Programs Subcommittee selects the winners of the Inclusion Awards, who are nominated by individuals or organizations in their communities.

The awards for the Bob Aldridge Advocate and Employer of the Year will be presented to the winners during the Annual Power Up Conference at Holiday Inn Select, Columbia in April 2010. The award for the Educator of the Year will be presented in the Hazelwood school district.

The 2009 Inclusion Award winners were:

Bob Aldridge Advocate of the Year — Darrell Wilson

Mr. Wilson is employed at the Office of Veterans Affairs in Mount Vernon and serves on the Board of Directors of The Independent Living Center, Inc. in Joplin, Missouri.

Mr. Wilson provides services to over 200 veterans. He recently worked with a veteran who returned from Iraq with a disability. The individual required extensive home modifications and adaptive equipment to enjoy his life as a civilian. Mr. Wilson helped get the necessary modifications and equipment while helping him enroll in school. Mr. Wilson has served on the board of directors of the Independent Living Center, Inc. in Joplin for seven years and has been instrumental in the success of the organization. He has served on the City of Joplin ADA Committee, working to ensure community-wide access. Recently, he worked with the Joplin Radio-Controlled Airplane Club to host a social activity for individuals with disabilities.

Employer of the Year — Friendship Village of South County, St. Louis

For more than 10 years, Friendship Village of South County has partnered with the Special School District to provide students an opportunity to prepare for successful employment. Students work in a voluntary capacity throughout the school year. By graduation, students have been given the opportunity to work about 1,600 hours honing their work skills in a real work setting. The Friendship Village community exemplifies inclusion while supporting student success. Student experiences have led to competitive employment, along with tremendous gains in self-worth and work ethics.

Educator of the Year — Chris Holmes.

Mr. Holmes teaches journalism classes at Hazelwood West High School and is the supervising teacher for the school newspaper and yearbook. He welcomes all students including those with disabilities and recognizes their individuality. He assigns projects and assignments based on the student's individual talents and interests to further those skills. Mr. Holmes practices inclusion and promotes disability awareness in the school. He has motivated other teachers to be understanding, tolerant, and appreciative of students with disabilities because of the challenges he has had raising his own son with autism. His real-life stories inspired students to learn more about their peers with disabilities and write a cover story for the school newspaper on three students with disabilities.

There was no winner awarded in the category of **Excellence in Universal Design and Technology**.

AWARDS

In April 2009, two recipients of the 2008 Inclusion Awards were honored during the annual Power Up Assistive Technology conference at the Holiday Inn Executive Center in Columbia.



Keith Wiedenkiller, Senior VP of Human Resources, accepted the 2008 Employer of the Year award on behalf of AMC Theatres in Kansas City.



Linda Baker (center) presented the 2008 Excellence in Universal Design and Technology award to Todd and Natalie Blakemore for creating the inclusive playground “Unlimited Play” in St. Louis.



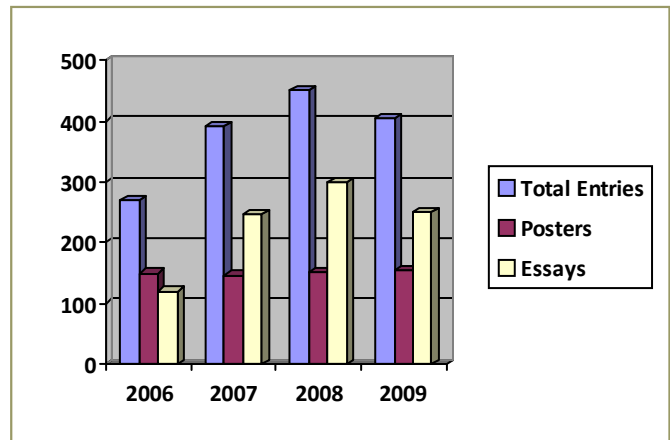
POSTER AND JOURNALISM CONTESTS

Each school year, the Governor's Council on Disability sponsors a Poster and Journalism Contest for middle and high school students to reward excellence in art and journalism and to increase disability awareness and promote inclusion of people with disabilities among Missouri's youth.

Both contests are open to middle and high school students grades 7 through 12 and prizes are awarded to the top three winners of both middle school and high school age groups. Information about the contests is distributed statewide to schools and local organizations.

The number of students who participated in the contests was 405 in 2009 compared to 451 in 2008, which is a 10% decrease in participation. 155 posters and 250 essays were submitted in the contests in 2009.

The overall, second, and third place winners in both contests were selected by the Council's Programs Subcommittee and received savings bonds of \$400, \$200, and \$100 respectively. The overall recipient was honored at the Missouri Assistive Technology's Power Up conference in Columbia in April 2009 and the second and third place winners received their awards at their schools. Several businesses donated items that were used as "door" prizes for the non-winning entrants. The winners for the 2009 Poster and Journalism Contests were:



POSTER CONTEST



Overall Grand Prize

Peter Yankowsky
 Platte County R III School (12th Grade)
 Platte City MO



High School

2nd Place

John Parks

University City High School (12th grade)

University City MO



Middle School

2nd Place

Brock Wright

Brookfield R III School (7th Grade)

Brookfield MO



3rd Place

Candice Mathews

Lee's Summit High School (10th Grade)

Lee's Summit MO



3rd Place

Katie Baker

Odessa Middle School (8th Grade)

Odessa MO

Journalism Contest

Overall Grand Prize

Peter Yankowsky

Platte County R III High School (12th Grade)

Platte City MO

High School

2nd Place

Austin Gibbs

Warrenton High School (11th Grade)

Warrenton MO

Middle School

2nd Place

Lauren Fuller

Jefferson Junior High

(9th Grade)

Columbia MO

3rd Place

Shawn Williams

Fort Zumwalt North High (12th Grade)

O'Fallon MO

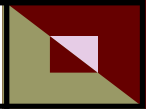
3rd Place

Michon Madison

Wydown Middle School (8th Grade)

Clayton MO

The winning essays are available online at www.disabilityinfo.mo.gov/gcd, click on Poster and Journalism contest.



PUBLICATIONS / RESOURCES

DIRECTORY OF RESOURCES FOR MISSOURIANS WITH DISABILITIES

The Governor's Council on Disability publishes a variety of information on the Disability Web Portal, including the *Directory of Resources for Missourians with Disabilities*. The Directory is available online (www.disabilityinfo.mo.gov) and allows each user to search for disability-related resources by category or location. In 2009, over 250 visitors per month accessed or downloaded the Directory.

LEGISLATIVE UPDATE

During the legislative session, a weekly update - *Legislative Update* - was distributed to keep interested individuals up-to-date on legislation that potentially impacts individuals with disabilities. Over 1,400 individuals received the publication via email and the regular mail system in addition to the website. The number of recipients increased by 7.7% compared to 2008.

The Governor's Council on Disability also disseminated a variety of other publications, including the *Americans with Disabilities Act Accessibility Guidelines*, the *Equal Employment Opportunity Commission Questions and Answers* booklets, *Disaster Preparedness for Persons with Disabilities*, the *Service Animals* booklet, *Missouri's Guide to Home and Community Based Services*, *Missouri's Guide to Housing Assistance Programs* and *Missouri State Capitol Access Guide*.

LEGISLATIVE EDUCATION PROJECT

The purpose of the Legislative Education Project (LEP) is to educate about the Missouri legislative process and motivate individuals by providing opportunities to become actively involved in positive public policy for people with disabilities. The LEP is sponsored annually during the legislative session.

During the 2009 legislative session, 46 individuals attended the three-day LEP training program, held weekly at the state capitol. Participants were given an overview of the legislative process and a list of bills that would have an impact on individuals with disabilities. Participants were then encouraged to visit with senators and representatives and their legislative staff to discuss their concerns and voice their opinions. Attendees were also strongly encouraged to attend any hearings that took place while they were in Jefferson City. Individuals left the capitol with a new confidence in getting their voice heard both in Jefferson City and in their home districts.

In addition to the three-day LEP, the Governor's Council on Disability offered customized one-day training sessions on the legislative process for those who were unable to commit to staying three days for the LEP. A total of 101 participants attended this customized training.

Governor's Council on Disability annually conducts a Legislative Priority Survey to determine the top legislative priorities among people with disabilities. The survey is sent out to agencies and individuals. Based on the 200+ returned surveys, the 2010 legislative priorities for the Governor's Council on Disability will be:

- Health Care Issues
- Fiscal Policies
- Home and Community Based Services
- Transportation

MISSOURI BUSINESS LEADERSHIP NETWORK

The Business Leadership Network (BLN) is an employer driven endeavor to promote best practices in disability employment. In Missouri, there are two regional locations: 1) St. Louis region—Missouri Business Leadership Network (MOBLN)—that covers eight of the Southern Illinois counties; 2) Kansas City region—Greater Kansas City BLN (GCKBLN)—which covers the western Missouri and eastern Kansas area. GCKBLN is the first BLN development that is a collaborative between two states.

MOBLN's employers hosted monthly luncheons for new employers to learn how to be inclusive of people with disabilities in the workforce. Beth Butler, Chair of the USBLN was the speaker at the celebration of Disability Employment Awareness Month on October 22, 2009 hosted by Wells Fargo in St. Louis. Further information can be found on the website at www.mobln.org.

Greater Kansas City BLN's October Disability Employment Awareness Month celebration was co-sponsored with Spencer Fane Britt & Browne LLP. An ADA update presentation was highlighted by board members Sue K. Willman, JD, SPHR—Labor and Employment Attorney, and Keith P. Wiedenkiller, SPHR—Senior Vice President and Chief People Officer. For more information, please visit the website at www.blm-gkc.org.

The Governor's Council on Disability is a partner with the statewide employment initiative called *Employment First*. Presentations on how to include people with disabilities in the labor market have continued to various entities.

MISSOURI YOUTH LEADERSHIP FORUM

The Missouri Youth Leadership Forum (MYLF) was held July 26-29, 2009 at the University of Missouri in Columbia. Twenty-three (23) youth-delegates participated in the four-day event, which is a unique career leadership training for high school juniors and seniors with disabilities. By serving as delegates from their communities, young people with disabilities cultivated leadership, citizenship, and social skills. Activities included speakers, small group discussions, assistive technology demonstrations, career exploration, mentoring dinner, and a day at the State Capitol in Jefferson City to meet with legislators.

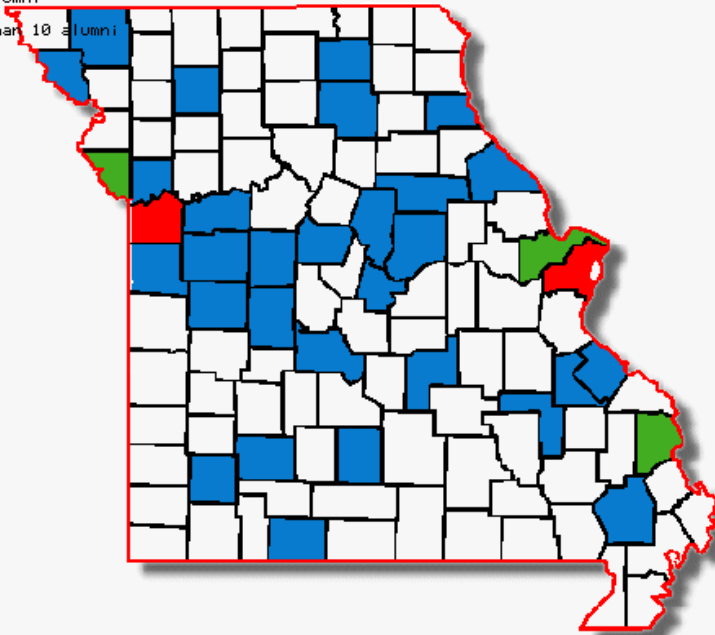


As part of the training, students participated in a mock legislative session at the state capitol in Jefferson City where the delegates had the opportunity to meet with Governor Jeremiah W. (Jay) Nixon. Also pictured are Representative Jeff Grisamore and Representative Sara Lampe's Legislative Staff Kelly Schultz.



Missouri Youth Leadership Forum - Alumni by Counties

- - less than 5 alumni
- - 5-10 alumni
- - more than 10 alumni



11-25-09

The counties displayed on the map include the following:

Group I: (less than 5 alumni)

Adair, Audrain, Benton, Boone, Callaway, Camden, Cass, Clay, Cole, Cooper, Daviess, Greene, Henry, Holt, Iron, Johnson, Lafayette, Lawrence, Macon, Marion, Nodaway, Pettis, Phelps, Pike, Ste. Genevieve, St. Francois, Stoddard, Taney, Wright

Group II: (between 5 and 10 alumni)

Cape Girardeau, Platte, St. Charles

Group III: (more than 10 alumni)

Jackson, St. Louis City and St. Louis County

Total no. of counties listed: 34

Total number of alumni attending the Missouri Youth Leadership Forum between 2001-2009: 112

Outcomes from the MYLF are:

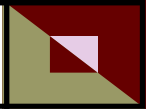
- Ten alumni attended the 2009 MYLF as facilitators and team members
- The national youth leadership survey revealed that over 80% of the alumni reported that the MYLF increased their knowledge about career possibilities, disability laws, disability culture, and had a positive impact on their overall life experience
- The majority of the alumni are obtaining their high school diploma and are employed at least part-time
- Several alumni are attending graduate school and one alumna is studying abroad
- One alumnus was elected Vice President of the Student Council

The 2010 MYLF will be held at the University of Missouri in Columbia from July 25-28, 2010.

OUTREACH ACTIVITIES

The Governor's Council on Disability participated in numerous outreach activities throughout the year to promote disability awareness and inclusion of people with disabilities in all aspects of life. Some of the highlights were:

- The Governor's Council on Disability continuously updated the Missouri Disability Portal to serve as a one-stop access point for the public to obtain information on disability resources. The homepage of this portal offers links to other entities and state agencies that provide services to people with disabilities. Resources are listed in different categories such as Employment, Housing, Education, and Transportation to make it easier for individuals to find the information they are looking for. Our office received inquiries regarding our website content from individuals nationwide. In an average month, our website receives about 102,600 hits or 3,350 hits per day. The average number of visitors to our website is 8,350 per month or 275 per day with an average of over 555 page views per day. The Missouri Disability Portal can be accessed at www.disabilityinfo.mo.gov
- GCD's Disability Program Specialist Isabelle Harris serves as the state coordinator for National Disability Mentoring Day (DMD) events in Missouri. Several DMD events were held across the state during the month of October. October is the National Disability Employment Month and October 21 was Disability Mentoring Day. Council staff presented the Governor's proclamation declaring October 21 as Disability Mentoring Day in Missouri. More than 290 high school students with disabilities throughout the state had the opportunity to meet mentors in their local communities.
- GCD provided exhibit booths at the following conferences throughout the year:
 - ⇒ Autism Conference, St. Joseph
 - ⇒ Autism Spectrum Disorder: Beyond the Diagnosis II, Overland Park, Kansas
 - ⇒ Central Missouri Autism Spectrum, Columbia
 - ⇒ Children's Vision Summit, Jefferson City
 - ⇒ Community Resource Fair, Kansas City
 - ⇒ Down Syndrome Association, St. Louis
 - ⇒ High School Transition Fairs in Marshall, Sedalia, Blue Springs, Lee's Summit
 - ⇒ Inclusion & Diversity in the Workplace, Jefferson City
 - ⇒ Missouri Association of County Developmental Disabilities Services (MACDDS), Lake Ozark
 - ⇒ Missouri School Counselors Association, Lake Ozark
 - ⇒ Missouri State Rehabilitation Association, Osage Beach
 - ⇒ No More Stares, St. Joseph
 - ⇒ People First of Missouri, Osage Beach
 - ⇒ Power Up, Columbia
 - ⇒ Special Education Administrator's Conference, Osage Beach
 - ⇒ Tools for Life Transition Summit, Jefferson City
 - ⇒ Walk Now for Autism Resource Fair, Kansas City



BOARD AND COMMISSIONS

As part of the Governor's Council on Disability's advisory capacity function, staff and Council members serve on a variety of boards and commissions to promote opportunities in all aspects of life, including employment, transportation, recreation, and housing. The following is a list of those boards and commissions in which staff and Council members served in calendar year 2009.

Alliance for Full Participation, Columbia
American Association of People with Disabilities, Kansas City
Blind Literacy Task Force, Jefferson City
Brain Injury Association of Missouri, St. Louis
Clay and Platte County Parks, Trails and Greenways Board of Directors, Kansas City
Coalition for Independence, Kansas City
Columbia League of Women Voters – Health Committee, Columbia
Commission on the Courts of the Disabled
Community Rehabilitation Programs in Iowa, Kansas, Missouri and Nebraska, Columbia
Council of State Directors of Vocational Rehabilitation, Columbia
Disability Mentoring Day Planning Committee, Statewide
Disability Policy Congress, Jefferson City
Down Syndrome Association of Mid-Missouri, Columbia
Early Childhood Comprehensive System Grant Planning Committee
East-West Gateway Council of Governments, St. Louis
Greater Kansas City Provider Leadership Network, Kansas City
Independent Living Resource Center, Jefferson City
Interagency Task Force on Emergency Preparedness, Statewide
Kansas City Coalition Emergency and Disaster Response Board of Directors, Kansas City
Kansas City Transportation Authority, Kansas City
Learning Disabilities Association of America, Kansas City
Lincoln University 504/ADA Committee, Jefferson City
Mayor's Commission on Human Rights, Springfield
Metropolitan Council on Developmental Disabilities, Kansas City
Missouri Association of Parents of Visually Impaired MOAPVI, Jefferson City
Missouri Council of the Blind, St. Louis
Missouri Department of Elementary and Secondary Education Blind Task Force, St. Louis
Missouri Department of Elementary and Secondary Education Special Education Advisory Panel, St. Louis
Missouri Disability Vote Coalition, Jefferson City
Missouri Disability Vote Coalition Leadership Advisory Council, Jefferson City and Joplin
Missouri Institute on Human Development Steering Board, Statewide
Missouri Parent's Act, Jefferson City
Money Follows the Person Stakeholders Group, Jefferson City
MOTASH, St. Louis
MYLF Planning Committee, Jefferson City
NAMI National Consumer Council, Statewide
National Association of Governors' Committees on People with Disabilities
National Council on Independent Living, Mt. Vernon

BOARD AND COMMISSIONS, continued

National Council on Rehabilitation Education, Columbia
National Disability Mentoring Day Local Committee, Kansas City
National Institute on Disability and Rehabilitation Research, Columbia
National Summer Institute, Kansas City
Nelson Atkins Museum of Art, Kansas City
North Kansas City School District Vocational Carpentry Advisory Board, Kansas City
Pettis County Inter-Agency Group, Sedalia
Rehabilitation Services Administration, Columbia
Share-A-Fare (Paratransit), Kansas City
Southwest Regional Advisory Council for the MO Department of Mental Health
Special Needs Population Task Force, Mt. Vernon
St. Louis County Commission on Disabilities, St. Louis
St. Louis Transitional Council, St. Louis
State Rehabilitation Council for the Blind, Jefferson City
State Vocational Rehabilitation Agencies, Columbia
Statewide Emergency Management Planning Teams, Statewide
Statewide Independent Living Council, Jefferson City
Statewide Navigator Task Force, Jefferson City
Statewide Quality Assurance Council, Statewide
The ARC of the US, Missouri Chapter
University of Missouri Extension Council, Osage Beach
University of Missouri-Kansas City Advisory Committee, Kansas City
Variety Club of Women, St. Louis
VSA, St. Louis
West-Central Independent Living Solutions, Warrensburg
Youth Leadership Council, Kansas City



LEGISLATION

The Governor's Council on Disability will continue to advocate for people with disabilities in the 2010 legislative session.

- The Legislative Subcommittee is examining pre-filed bills that relate to disability and is analyzing their impact on the disability community.
- The Council is using the results of the 2009 legislative survey as a basis for pursuing legislative issues in the upcoming 2010 session. Please refer to page 15 of the annual report for a listing of the legislative priorities.
- The Governor's Council on Disability, the Statewide Independent Living Council (SILC) and Missouri Centers for Independent Living (MOCIL) will continue to co-sponsor the Legislative Education Project (LEP) (see page 15).

PERSONAL INDEPENDENCE COMMISSION

The Personal Independence Commission (PIC) completed its eighth year of work. As established by Executive Order 01-08, the PIC is charged with advising the Governor on necessary policy and program changes to assure that Missourians of all ages and disabilities have access to a range of community support services. The PIC includes individuals with disabilities, family members of people with disabilities, senior citizens, advocacy groups, a representative of the Lieutenant Governor's office, four members of the General Assembly and representatives from the Departments of Social Services, Mental Health (DMH), Health and Senior Services (DHSS), and Elementary and Secondary Education (DESE).

The staff of the Governor's Council on Disability continued to provide technical and staff support to the activities of the PIC. In 2009, the PIC continued to work with DHSS and DMH on the Money Follows the Person Grant received by DHSS, DMH and Department of Social Services (DSS). DHSS will be seeking input and guidance from the PIC as they implement the various components of this grant. The PIC also continues to closely monitor information concerning MO HealthNet and issues surrounding Bellefontaine Habilitation Center.

Proposed 2010 PIC Meeting Dates

To be determined

The PIC meetings are scheduled to begin at 10:30 AM at the State Capitol in Hearing Room 3.

For more information, please visit the Personal Independence Commission website at <http://www.disabilityinfo.mo.gov/gcd/PIC/PIC.shtml>

2010 MEETING AND EVENT DATES

GOVERNOR'S COUNCIL ON DISABILITY COUNCIL MEETING DATES

January 11, 2010 **

March 1, 2010 *

May 3, 2010 **

July 12, 2010 **

September 13, 2010 *

November 8, 2010 *

The Council meetings are scheduled to begin at 10 AM.

* Face-to-face meetings will be held at the
Governor's Office Building
200 Madison Street, Room 470

** Electronic meetings will be held via videoconference or webcast.

The Council meetings are open to the public. If you would like to attend or request additional information, please contact our office at gcd@oa.mo.gov or 573-751-2600.

MISSOURI YOUTH LEADERSHIP FORUM UNIVERSITY OF MISSOURI - COLUMBIA

July 25-28, 2010