



---

## 2012 ANNUAL REPORT



Office of Administration

**Governor's Council on Disability**

301 West High Street  
Room 840  
PO Box 1668  
Jefferson City, MO 65102

Phone: 573-751-2600  
Toll-free: 800-877-8249  
Fax: 573-526-4109  
E-mail: [gcd@oa.mo.gov](mailto:gcd@oa.mo.gov)  
Website: [disability.mo.gov](http://disability.mo.gov)



## TABLE OF CONTENTS

History	4
Mission / Vision / Goals	4
Council Membership	5
Organizational Structure	6
Council Events 2012 / Programs	7
Finances	8
Accomplishments	9
Technical Assistance	9
Presentations and Exhibits	10
Awards	11
Publications / Resources	13
Legislative Education Project	13
Business Leadership Networks in Missouri / Employment	14
Missouri Youth Leadership Forum	14
Outreach Activities	16
Boards and Commissions	17
Legislation	18
Upcoming Events / 2013 Meeting Dates	18

## HISTORY

The Governor's Council on Disability traces its roots to the World War II era. In 1947, President Harry S Truman issued an Executive Order establishing the President's Committee on Employment of the Handicapped. This Committee was created to assist disabled WW II veterans with reentry into the civilian workforce. In 1949, Missouri established the state Governor's Committee to share information about work related problems facing people with disabilities. In 1994, our statute was updated to broaden our mission beyond employment, enabling the Governor's Council on Disability to become a voice for more than one million Missourians with disabilities in all facets of life, including state government.

## MISSION

To provide leadership and support so people with disabilities achieve inclusion and independence.

## VISION

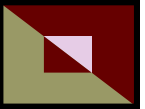
The Missouri Governor's Council on Disability will be recognized, statewide as the primary organization providing leadership to improve the lives of Missouri citizens with disabilities.

## GOALS

The Missouri Governor's Council on Disability's Strategic and Operational Plan was reviewed and updated for 2012-14 on September 21, 2012. The Goals are:

- Goal I: Advise all state agencies and advocate for policies and practices that impact Missouri citizens with disabilities.
- Goal II: Encourage system changes and public policies that eliminate barriers to people with disabilities.
- Goal III: Expand opportunities and independence for people with disabilities in all aspects of their lives.
- Goal IV: Gather input from the public on disabilities-related issues and report the results of this information.
- Goal V: Develop, explore, and implement strategies to increase resources for and the operating efficiency of the Council.

For the complete Strategic Plan, please visit our website at <http://disability.mo.gov/gcd> and click on Strategic Plan.



## COUNCIL MEMBERSHIP

- 20 members and a chairperson comprise the Council.
- Council members are appointed by the Governor.
- The appointment of the chairperson requires the advice and consent of the Missouri Senate.
- Members represent each of the nine U.S Congressional Districts.
- The majority of members are people with disabilities.
- The Governor's Council is comprised of the following committees: Executive and Strategic Planning, Finance and Development, Personnel, Advocacy, Programs, and Employment and Education.
- The Council conducts quarterly meetings.

**James Trout**  
**Acting Chair**

Member 3  
Webster Groves  
First Appointed: 3/4/09

---

**Rep. Jeff Grisamore**

Member 4  
Lee's Summit  
First Appointed: 5/10/10

**Susan Orton**

1<sup>st</sup> Congressional District  
Creve Coeur  
First Appointed: 7/19/05

**Joan Bergstrom**

Member 1  
Lee's Summit  
First Appointed: 7/15/08

**Ronald Hack**

Member 10  
Sunset Hills  
First Appointed: 10/2/09

**Derek Smith**

Member 11  
Osage Beach  
First Appointed: 3/25/10

**Betty Davidson**

Member 5  
St. Louis  
First Appointed: 11/16/09

**Mary Ann Harter**

3<sup>rd</sup> Congressional District  
Crestwood  
First Appointed: 11/16/09

**Robert Wallace**

Member 2  
St. Louis  
First Appointed: 5/10/10

**Charles Comstock II**

Member 6  
Kirksville  
First Appointed: 7/29/10

**Todd Mayfield**

4<sup>th</sup> Congressional District  
Jefferson City  
First Appointed: 10/9/01

As of December 1, 2012, there  
were five Council member  
vacancies.

**Edward Duff**

7th Congressional District  
Joplin  
First Appointed: 7/19/05

**Teri Miller**

Member 9  
Chesterfield  
First Appointed: 10/2/09

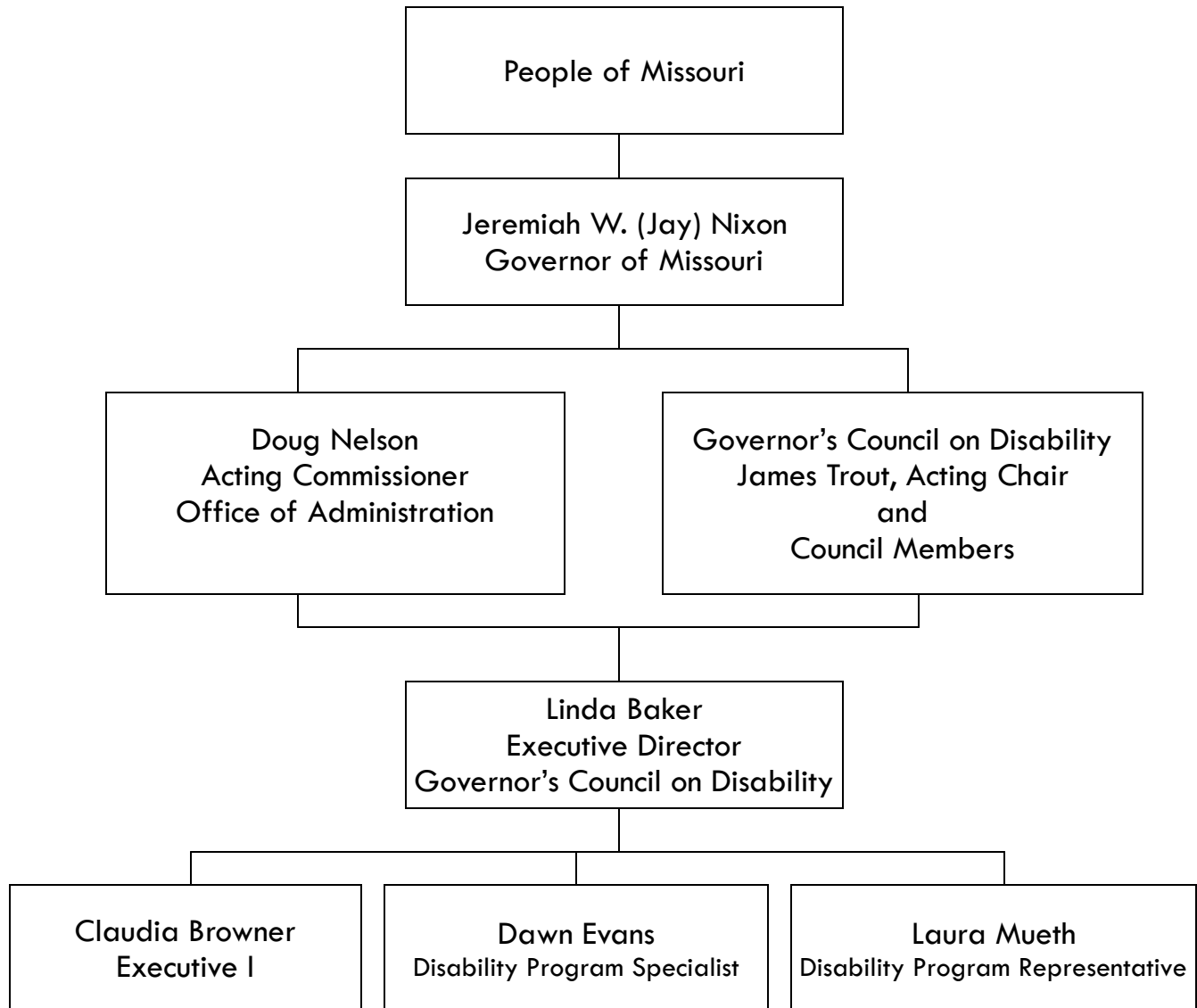
**Michael Esser**

2<sup>nd</sup> Congressional District  
Chesterfield  
First Appointed: 10/14/05

**DeAnna Noriega**

9<sup>th</sup> Congressional District  
Fulton  
First Appointed: 10/2/09

## ORGANIZATIONAL STRUCTURE





## COUNCIL EVENTS 2012

### COUNCIL MEMBERSHIP

- James Trout continued to serve as the Acting Chair for the Council.
- Council member Erwin Switzer resigned on October 3 due to being appointed by the Governor to serve on the Saint Louis City Board of Police Commissioners.
- There are currently five vacancies for Council members, and the Council Chair position.

### STAFF

- Dawn Evans was hired as the new Disability Program Specialist in April 2012.

### PROGRAMS

- The online Resource Directory for Missourians with Disabilities was updated and redesigned to make it more user-friendly.
- GCD developed and maintained partnerships among the state departments. The state department liaisons are encouraged to attend the quarterly Council meetings and provide input.
- The GCD received a proclamation from Governor Jeremiah W. (Jay) Nixon, declaring October as Disability History Awareness Month.
- Council staff provided exhibit booths at various conferences throughout the State of Missouri to raise disability awareness and provide information on disability related programs and resources.
- Staff provided presentations on the topics of employment of people with disabilities, disability awareness, service animals, and the Missouri Youth Leadership Forum as requested by agencies and employers.
- The GCD continued its annual programs
  - ⇒ Legislative Education Project
  - ⇒ Missouri Youth Leadership Forum
  - ⇒ Inclusion Awards

## FINANCES

The Governor's Council on Disability's programs are primarily financed through General Revenue. This funding covers personnel costs for most Council activities. The Fiscal Year 2013 (July 1, 2012 –June 30, 2013) budget is listed below:

Personnel (4 FTE):	\$166,455.00
Operating Expenses:	\$ 19,205.00
Total:	\$185,660.00

At the time of publication, the Council has spent \$7,769.34 in operating expenses, 40.5% of the FY13 budget. Expenses include supplies, travel, Council meeting expenses, professional development, and expenses for GCD programs.

The Missouri Youth Leadership Forum (Forum) is a program that is not funded through General Revenue funds. This program is funded through a combination of private donations and grants.

Services for Independent Living (SIL) in Columbia is the 501(C)3 fiscal agent for the Forum account.

The following is a synopsis of the 2012 Forum budget.

Beginning balance OA revolving account (FY11) July 1, 2012	\$ 5,290.60
Beginning balance Forum account (with SIL) July 1, 2012	\$ 11,520.00
2012 Forum event costs:	
Supplies & Material	\$ 1,548.43
Presenter Fees and Travel Expenses	\$ 1,008.00
Staff and Alumni Travel	\$ 447.39
Accommodations (PCAs)	\$ 2,319.65
Transportation/Scooter rental <sup>1</sup>	\$ 0.00
Meals (separate from MU billing)	\$ 1,019.76
University of Missouri – Columbia <sup>2</sup>	\$ 14,011.52
Total Spent:	\$ 20,354.75 <sup>3</sup>
Donations/sponsorships/deposits received in 2012:	\$ 11,450.00
Balance in OA revolving account (Dec. 12)	\$ 0
Balance in SIL account (December 2012)	\$13,905.85

- 1 - Transportation provided free of charge as an in-kind donation from Services for Independent Living in Columbia.
- 2 - Includes: Lodging, meals, banquet facilities, meeting rooms, conference center Fees.
- 3 - Includes \$6,000 pre-paid from FY12 funds.

*The average cost of the 2012 Forum was about \$1,000 per student delegate.*



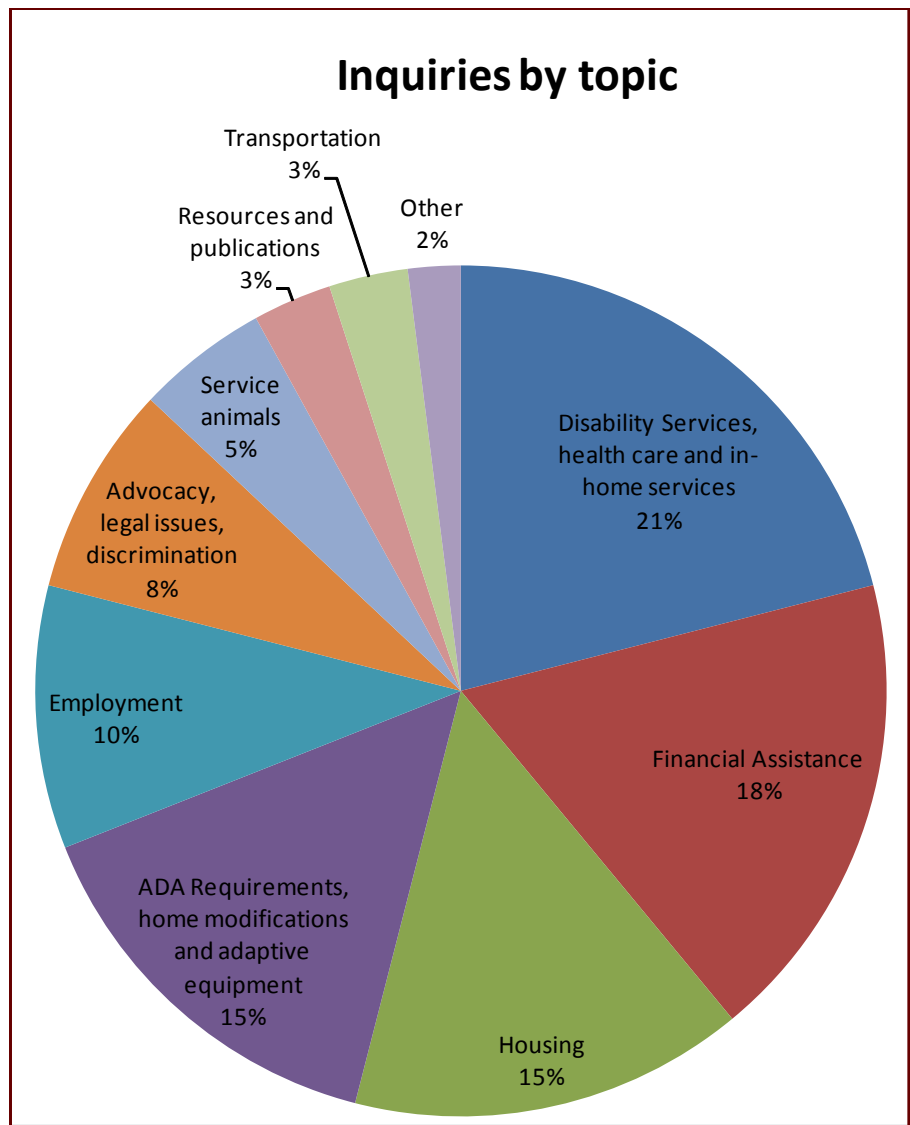
## ACCOMPLISHMENTS

### TECHNICAL ASSISTANCE

The Governor's Council on Disability provides disability-related technical assistance to individuals, businesses, governmental and agency representatives from all over the state, and occasionally from other states, by phone, letter, or e-mail. Most contacts were from individuals in need of resources in order to live more independently. Referrals were made to Centers for Independent Living, state and federal agencies, and other non-profits, including faith-based groups and Community Action Agencies. In some instances, referrals were made to businesses or for-profit entities. The Council also worked with a number of state legislators and the Governor's Office on Constituent Affairs to provide solutions to individuals' problems and issues.

In this past year, the Council received a substantial number of calls and e-mail inquiries concerning financial assistance, housing, employment, funding for health care assistance, utility assistance, service animals, transportation, and home modifications. Other common inquiries included information on disability statistics, state statutes, ADA guidelines and regulations, Universal Design standards, FMLA issues, how to secure affordable housing, eligibility requirements for disability benefits, and questions about potential discrimination on the job, in housing or in public places. Overall, the Council assisted more than 311 different individuals with their inquiries. Additionally, the Council

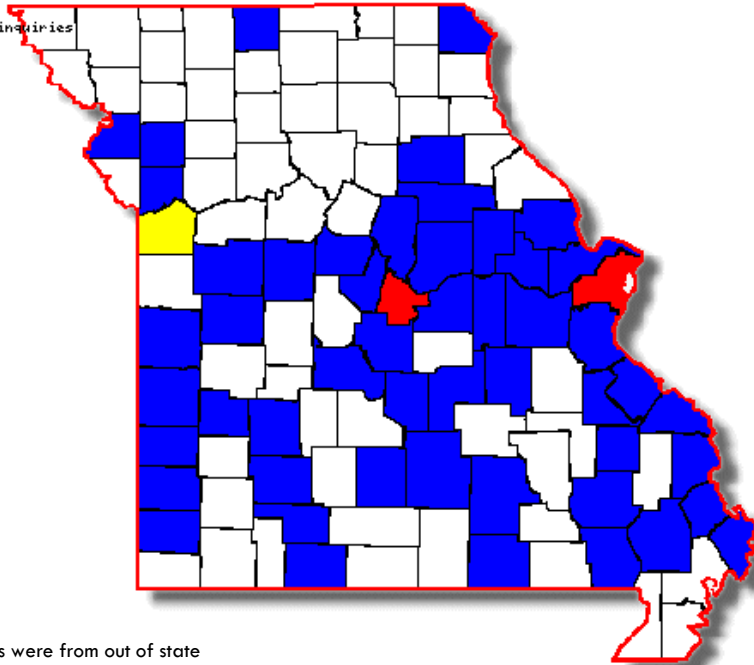
responded to 215 e-mail inquiries and requests. The number of callers has increased by 11.9% compared to 2012, and the number of e-mail inquiries has increased by 8.6%.



## ACCOMPLISHMENTS

### 2012 Phone inquiries by county

- - <5% of inquiries
- - 5-10% of inquiries
- - >10% of inquiries



#### NOTES:

5% of inquiries were from out of state

The counties displayed on the map include the following:

Group I (<5% of inquiries): Audrain, Barton, Bates, Boone, Buchanan, Butler, Callaway, Camden, Cape Girardeau, Cedar, Christian, Clark, Clay, Clinton, Cooper, Crawford, Franklin, Gasconade, Greene, Henry, Jasper, Jefferson, Johnson, Lincoln, Madison, Mercer, Miller, Mississippi, Moniteau, Monroe, Montgomery, Newton, Oregon, Osage, Perry, Pettis, Phelps, Polk, Pulaski, Scott, Shannon, St. Charles, St. Francois, Ste. Genevieve, Stoddard, Taney, Texas, Vernon, Warren, Wayne, Wright

Group II (5-10% of inquiries): Jackson and

inquiries from out of state

Group III (>10% of inquiries): Cole, St. Louis

Total number of counties listed: 55

## PRESENTATIONS AND CONFERENCE EXHIBITS

The Governor's Council on Disability provides educational programs on disability rights and disability awareness, employment of people with disabilities, service animals and other disability-related topics to any group or organization in Missouri requesting such information. Educational programs are specifically tailored to the individual or group to ensure effectiveness. At several of the quarterly public Council meetings, a presentation is provided on different disability-related topics.

During calendar year 2012, GCD staff developed and presented 17 programs and 16 conference and transition fair exhibits to more than 3,200 individuals around the state (see Page 16 —Outreach Activities for more details).

## AWARDS

The Governor's Council on Disability sponsors the Annual Inclusion Awards each year.

### ANNUAL INCLUSION AWARDS

The Governor's Council on Disability's annual Inclusion Award program recognizes and honors a Missouri resident, organization or business that illustrates excellence in leadership for best inclusion practices. Innovative universal design and assistive technology concepts that incorporate people with disabilities also may be submitted. The Council's Programs Committee selects the winners of the Inclusion Awards, who are nominated by individuals or organizations in their communities.

The 2011 winners were honored at the annual Power Up Conference at the Holiday Inn Executive Center, Columbia, in April 2012.

The 2011 **Inclusion Award Winner** was Kent Schien of **Innoventor, Inc.**



Loretta Muretech accepted the award on behalf of Kent Schien

Kent Schien, CEO and founder of St. Louis-based engineering firm Innoventor Inc., dedicates much time to ensuring that people with disabilities are included and involved in their communities and workforce. Schien implemented a supported employment program at his company two years ago. Currently, three individuals with disabilities gain valuable skills through their jobs at Innoventor, increasing the company's diversity. As a board member of Life Skills, an organization that supports people with developmental disabilities as they find meaningful work and live in homes of their own in St. Louis, Schien heads up a local corporate council to encourage other businesses to employ people with disabilities. Mr. Schien has increased awareness by sharing information and success stories through the council, which has resulted in cultivating jobs that may not been obtained by individuals with developmental disabilities. Senior Executive Assistant Loretta Muretech accepted the award on his behalf.

The 2011 recipient of the **Honorable Mention** was **Ameren**.

Ameren is committed to the advocacy of individuals with disabilities by increasing its focus on inclusion in the work environment and eliminating barriers to personal independence. Ameren provides assistive technology to customers and employees.

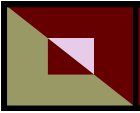
Ameren Network for Disabled Employees' (ANDE - a professional employee resource group) mission is to engage, empower, and include employees by providing educational opportunities that will assist with the development of individuals with disabilities.

Warren Wood, VP for Regulatory and Legal Affairs, accepted the award.



Warren Wood accepts the award

(Continued on page 12)



## AWARDS

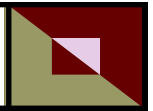
*(Continued from page 11)*

For the 2012 Inclusion Awards, the Governor's Council on Disability again received a large number of nominations.

The **2012 award winner is Jaime Janes, Kirksville R-III**. Ms. Janes is a Special Education teacher who directs the community based work experience program, is the lead for Special Olympics, the Chair of the Community Transition Team, a leader with the Peer Supports grant, and a People First advocate. Ms. Janes works with students with disabilities to experience employment, become self advocates, pursue training after graduation from high school, and to link up with adult services. She works with teachers on how to develop a transition plan for students and creates adaptations for the students at work sites so they can accomplish their jobs. She is the leader of the Peer Supports grant, which provides training and supports for teachers in general education, and helps students become natural peers in the academic setting. As a People First advocate, Ms. Janes has raised awareness in the school and community about putting people first, instead of their disability and for students to be included in education, sports, work sites, and the community.

The **Honorable Mention for 2012 goes to Michelle Zvanut, Boone Hospital Center**. In the summer of 2012, Boone Hospital Center (BHC) opened its doors to youth with intellectual and developmental disabilities as a principal partner in the Seamless Transition through Enhanced Partnership (STEP) program. STEP is a collaboration involving the hospital, Columbia Public Schools, Division of Vocational Rehabilitation, Boone County Family Resources, and ACT. Michelle Zvanut, Vice President of Human Resources, is BHC's liaison to STEP. BHC provides classroom space, mentoring and on the job learning experiences for six high school seniors with disabilities. BHC is not only actively including the students among hospital staff in various department roles, but also bolstering their potential for fully included lives as productive adults after their graduation. BHC values its part in furthering possibilities for the student interns, and embraces the opportunity to diversify its workplace and enhance the culture of its workforce.

The awards for 2012 will be presented at the 2013 Power Up Assistive Technology conference in Columbia on April 16, 2012. For additional information, please visit our website at <http://disability.mo.gov/gcd/inclwin.htm>



## PUBLICATIONS / RESOURCES

### DIRECTORY OF RESOURCES FOR MISSOURIANS WITH DISABILITIES

The Governor's Council on Disability publishes a variety of information on the Disability Web Portal, including the *Directory of Resources for Missourians with Disabilities*. The online Directory allows each user to search for disability-related resources by category or location. In 2012, over 2,750 visitors accessed or searched the Directory.

### LEGISLATIVE UPDATE

During the legislative session, a weekly update - *Legislative Update* - was distributed to keep interested individuals up-to-date on legislation that potentially impacts individuals with disabilities. Over 1,400 individuals received the publication via email and the regular mail system in addition to the website.

### OTHER PUBLICATIONS

The Governor's Council on Disability also disseminated a variety of other publications, including *Disaster Preparedness for Persons with Disabilities*, the *Service Animals* booklet, *accessible parking info "Ticket"*, *Missouri's Guide to Home and Community Based Services*, *Missouri's Guide to Housing Assistance Programs* and *Missouri State Capitol Access Guide*.

## LEGISLATIVE EDUCATION PROJECT

The purpose of the Legislative Education Project (LEP) is to educate individuals about the Missouri legislative process and motivate individuals by providing opportunities to become actively involved in public policy that impacts people with disabilities. The LEP is sponsored annually during the legislative session.

In 2012, the Governor's Council on Disability offered six LEP webcast training sessions to individuals and agencies. A total of 65 participants attended the LEP webcasts during the 2012 legislative session from their homes or local provider agencies. Additionally, 13 of these individuals attended the two-day LEP training program, held between February and April at the state capitol. Participants were given an overview of the legislative process and a list of bills that would have an impact on individuals with disabilities. Participants were then encouraged to visit with senators and representatives and their legislative staff to discuss their concerns and voice their opinions. Attendees were also strongly encouraged to attend any hearings that took place while they were in Jefferson City. Individuals left the capitol with a new confidence in getting their voice heard both in Jefferson City and in their home districts.

The Governor's Council on Disability annually conducts a **Legislative Priority Survey** to determine the top legislative priorities among people with disabilities. The survey is sent out to agencies and individuals. Based on the 252 returned surveys, the 2013 legislative priorities for the Governor's Council on Disability will be:

- Maintaining the Human Rights Act
- Adding dental coverage, comprehensive day rehabilitation, and hearing aid coverage under MO HealthNet
- Working on Mo HealthNet spenddown issues



## BUSINESS LEADERSHIP NETWORKS / EMPLOYMENT

The Business Leadership Network (BLN) is an employer driven endeavor to promote best practices in disability employment. In Missouri, there are two regional locations: 1) St. Louis region—Missouri Business Leadership Network (MOBLN)—that covers St. Louis and eight of the Southern Illinois counties; 2) Kansas City region—Greater Kansas City BLN (GKCBLN)—which covers the western Missouri and eastern Kansas area. GCD continues to provide support to the GKC BLN and MOBLN.

In October 2012, the GKC BLN hosted a “Champions Awards” luncheon to honor the two winners UMB Financial Corporation and City Wide Maintenance for their best practice in hiring people with disabilities.

MOBLN offers a college scholarship program and awarded six metropolitan St. Louis youths with scholarships totaling \$6,000. MOBLN also announced the availability of three 2013-14 scholarships for students with disabilities from the Greater St. Louis area.

Both GKC BLN and MOBLN were chosen as Affiliates of the Month by the USBLN. This allows the affiliate to highlight their local BLN's program activities to other affiliates.

## MISSOURI YOUTH LEADERSHIP FORUM

The Missouri Youth Leadership Forum (Forum) was held July 22—25, 2012 at the University of Missouri in Columbia. Twenty-two (22) youth-delegates participated in the four-day event, which is a unique career leadership training for high school juniors and seniors with disabilities. By serving as delegates from their communities, young people with disabilities cultivated leadership, citizenship, and social skills. Activities included speakers, small group discussions, assistive technology demonstrations, career exploration, mentoring luncheon, and a day at the State Capitol in Jefferson City to meet with legislators.



As part of the training, students participated in a mock legislative session at the capitol, where the delegates and staff had the opportunity to visit the House and Senate Chambers, learn about the legislative process and discuss disability-related legislation with Representatives and Senators from several districts.

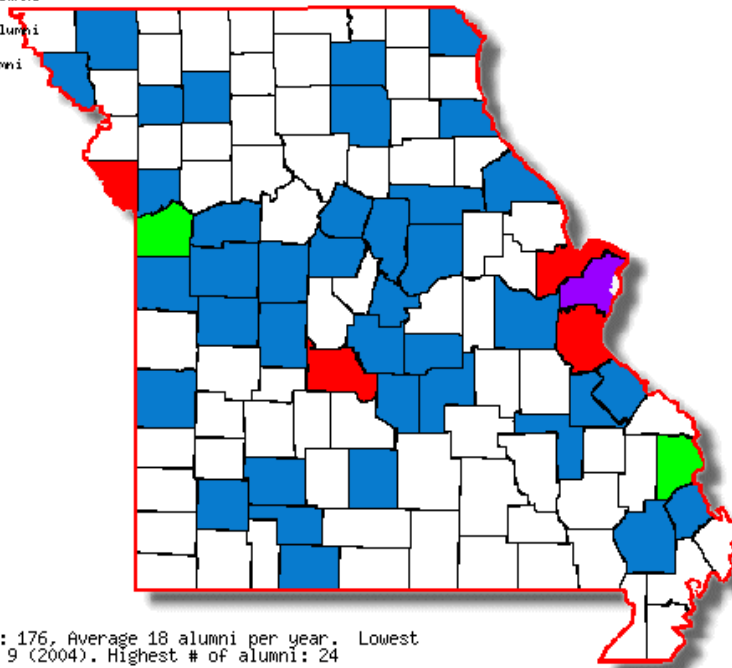
After the mock legislative sessions with the legislators, the delegates toured the Governor's office and signed the bill at his desk.





### Missouri Youth Leadership Forum - Alumni by Counties

- - < 5 alumni
- - 5 - 10 alumni
- - 11- 20 alumni
- - > 20 alumni



#### NOTES:

Total alumni: 176, Average 18 alumni per year. Lowest # of alumni: 9 (2004). Highest # of alumni: 24

The counties displayed on the map include the following:

- Group I** (less than 5 alumni):  
 Adair, Audrain, Benton, Boone, Callaway, Cass, Christian, Clark, Clay, Cole, Cooper, Daviess, DeKalb, Franklin, Greene, Henry, Holt, Howard, Iron, Johnson, Lafayette, Lawrence, Macon, Maries, Marion, Miller, Nodaway, Pettis, Phelps, Pike, Pulaski, Ste. Genevieve, St. Francois, Scott, Stoddard, Taney, Vernon, Wright
- Group II** (5-10 alumni):  
 Camden, Jefferson, Platte, St. Charles
- Group III** (11-20 alumni):  
 Cape Girardeau, Jackson
- Group IV** (more than 20 alumni):  
 St. Louis (City and County; total = 60)

Total no. of counties represented: **45**

Total number of alumni attending the Missouri Youth Leadership Forum from 2001 – 2012: **176**

Outcomes of the Forum are:

- The Forum partnered with the Missouri Assistive Technology Council to incorporate iPads as part of the delegates' learning experience. The delegates provided presentations at the closing ceremony using the iPads.
- Twenty-two (22) delegates attended in 2012, representing the different geographical areas in Missouri.
- Thirteen (13) alumni attended the 2012 Forum as facilitators and team members
- Some alumni are attending graduate school, one alumna will be starting an internship with GCD in the Spring of 2013.
- One alumnus is finishing law school focusing on disability policy.
- One alumnus has been appointed to the St. Louis County Commission on Disabilities

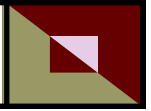
The 2013 Forum will be held at University of Missouri in Columbia from July 21-24, 2013.

## OUTREACH ACTIVITIES

The Governor's Council on Disability participated in numerous outreach activities throughout the year to promote disability awareness and inclusion of people with disabilities in all aspects of life. Some of the highlights were:

- GCD continues to update the Missouri Disability Web Portal, which serves as a one-stop access point for the public to obtain information on disability resources. The homepage of this portal offers links to other entities and state agencies that provide services to people with disabilities. Resources are listed in different categories such as Employment, Housing, Education, and Transportation to make it easier for individuals to find the information they are looking for. Our office received inquiries regarding our website content from individuals nationwide. In 2012, the Disability Web Portal had over 86,000 page views. The Missouri Disability Web Portal can be accessed at <http://disability.mo.gov>.
- GCD has a Facebook page with a growing fan base that reached 8,930 views in 2012.
- During the month of October, which is Disability History Month in Missouri, GCD featured a special showcase of Missourians with disabilities on the Disability Web Portal as well as an informational display in the Truman Building in Jefferson City about Disability History Month, National Disability Employment Awareness Month and Disability Mentoring Day.
- GCD provided exhibit booths at the following conferences throughout the year:
  - ⇒ APSE Conference, Columbia
  - ⇒ High School Transition Fairs in Eldorado Springs, Joplin, Lee's Summit, and Springfield
  - ⇒ Life Skills Central Missouri Autism Conference, Columbia
  - ⇒ Missouri Rehabilitation Association, Osage Beach
  - ⇒ Missouri Community Transition Team's Poster Session Conference (sponsored by DESE), Jefferson City
  - ⇒ Missouri Association of County Developmental Disabilities Services (MACDDS), Lake Ozark
  - ⇒ Missouri Housing Summit, Jefferson City
  - ⇒ Missouri School Counselors Association Conference (MSCA), Osage Beach
  - ⇒ MPACT Transition Summit, Jefferson City
  - ⇒ Power Up, Columbia
  - ⇒ Project Connect, Chillicothe
  - ⇒ Real Voices, Real Choices Consumer Conference, Osage Beach
  - ⇒ Walk Run N Roll Autism Walk and Resource Fair, St. Louis





## BOARD AND COMMISSIONS

As part of the Governor's Council on Disability's advisory capacity function, staff and Council members serve on a variety of boards and commissions to promote opportunities in all aspects of life, including employment, transportation, recreation, and housing. The following is a list of those boards and commissions in which staff and Council members served in calendar year 2012.

Aging and Disability Coalition, St. Joseph  
Alliance for Full Participation, Columbia  
American Association of People with Disabilities, Kansas City  
Brain Injury Association of Missouri, St. Louis  
Disability Mentoring Day Planning Committee, Statewide  
Disability Policy Congress, Jefferson City  
Down Syndrome Association of St. Louis  
East-West Gateway Council of Governments, St. Louis  
Employment First Initiative, Statewide  
Greater Kansas City Provider Leadership Network, Kansas City  
Interagency Task Force on Emergency Preparedness, Statewide  
Metropolitan Council on Developmental Disabilities, Kansas City  
Missouri Council of the Blind, St. Louis  
Missouri Disability Vote Coalition, Jefferson City  
Missouri Interagency Transition Team, Statewide  
Missouri Lifespan Respite Coalition  
Missouri Parent's Act, Jefferson City  
Money Follows the Person Stakeholders Group, Jefferson City  
MO Youth Leadership Forum Planning Committee, Jefferson City/Columbia  
NAMI National Consumer Council, Statewide  
National Association of Governors' Committees on People with Disabilities  
National Association of Workforce Development Professionals  
National Council on Rehabilitation Education, Columbia  
National Disability Mentoring Day Local Committee, Kansas City  
Pettis County Inter-Agency Group, Sedalia  
Rehabilitation Services Administration, Columbia  
Southwest Regional Advisory Council for the MO Department of Mental Health  
St. Louis Advisory Council, St. Louis  
St. Louis County Commission on Disabilities, St. Louis  
St. Louis Transitional Council, St. Louis  
State Rehabilitation Council for the Blind, Jefferson City  
State Vocational Rehabilitation Agencies, Columbia  
Statewide Emergency Management Planning Teams, Statewide  
Statewide Independent Living Council, Jefferson City  
Statewide Navigator Task Force, Jefferson City  
Variety Club of Women, St. Louis  
VSA, Statewide  
Youth Leadership Council, Kansas City  
YWCA Advisory Council on Sexual Assault Study of Women with Disabilities, St. Louis

## LEGISLATION

The Governor's Council on Disability will continue to advocate for people with disabilities in the 2012—13 legislative session.

- The Legislative Committee is examining pre-filed bills that relate to disability and is analyzing their impact on the disability community.
- The Council is using the results of the 2012 legislative survey as a basis for pursuing legislative issues in the upcoming legislative session. Please refer to page 13 of the annual report for a listing of the legislative priorities.
- The Governor's Council on Disability, the Statewide Independent Living Council (SILC) and Missouri Centers for Independent Living (MOCIL) will continue to co-sponsor the Legislative Education Project (LEP) (see page 13).

## 2013 MEETING AND EVENT DATES

### GOVERNOR'S COUNCIL ON DISABILITY COUNCIL MEETING DATES

February 4, 2013\*

April 18, 2013\*\*

September 19, 2013\*

November 21, 2013\*\*

The Council meetings are scheduled to begin at 10 AM.

\* Face-to-face meetings will be held at the  
Governor's Office Building  
200 Madison Street, Room 315

\*\* Electronic meetings will be held by videoconference in different locations across Missouri.

The Council meetings are open to the public. If you would like to attend or request additional information, please contact our office at [gcd@oa.mo.gov](mailto:gcd@oa.mo.gov) or 573-751-2600.

### MISSOURI YOUTH LEADERSHIP FORUM University of Missouri COLUMBIA

July 21—24, 2013